



ASIAREP
www.asiarep.com



ROAD CONDITION MONITORING

WHAT IS RCM SYSTEM?

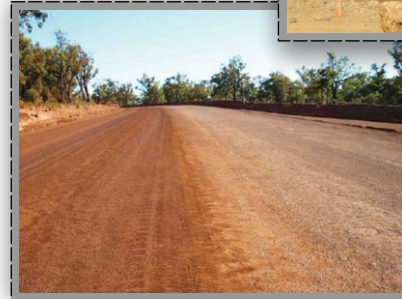
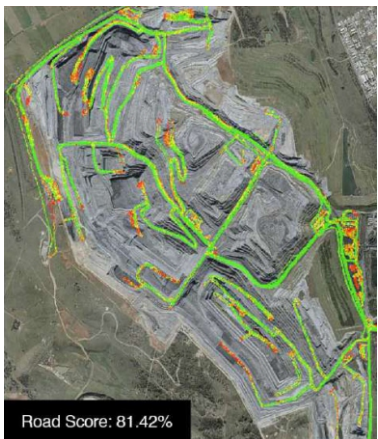
The Road Condition Monitor (RCM) is a real time maintenance management system used to monitor road conditions, prioritise maintenance works, improve operational efficiencies and lower the cost per tonne hauled

What is the Road Condition Monitor

The Road Condition Monitor [RCM] is a newly developed, leading edge tool used to measure road quality.

The RCM measures vibrations due to road deterioration. Using advanced algorithms, the RCM converts vibration readings into a user friendly "Road Score". The Road Score is used for site benchmarking, which in real-time, gives a quantifiable and objective assessment of road and pit conditions.

The system provides full site mapping, showing real-time road conditions in a simple colour scale format. The distinctive colours of green, yellow, orange and red indicated different levels of severity allowing maintenance locations to be brought to attention for site action, therefore, optimising secondary machinery allocation. The entire system is non-invasive and can be rolled out on site minimal effort



WHY USE IT ?

The RCM is a cost efficient solution for all mine site. A poorly maintained road can have a wide range of effects that include decreased production, increased fuel burn, increased mechanical wear, unsafe operating conditions, driver discomfort and higher rolling resistances. By successfully implementing the RCM system, sites can expect to obtain :

- * A lower cost per tonne hauled
- * Improved production efficiencies
- * Optimisation of maintenance scheduling
- * Increased tire life
- * Lower operating cost and fuel consumption

Did You Know ?

Over the life of your haul truck, you will spend the initial purchase price of the truck in tyre related costs





ASIAREP
www.asiarep.com



How Does The System Work?

Once the system is operational, the online management platform can easily be accessed via the web using a password protected login system. The system is designed with ease of use and flexibility in mind. With minimal training, the platform can easily be customised to meet sites' needs and objectives as :

- * Focus on particular roads of interest
- * With different standards to increase or decrease the road score if desired.
- * Select results based on particular vehicle (e.g. haul trucks, water carts and light vehicle). The amount of data gathered is increased proportionally with the quantity of RCMs installed on site, thus the quantity of monitors will increase the accuracy of the living mapping system.

FEATURES

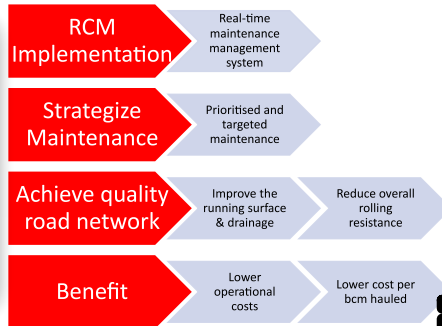
- * Industrial temperature (-30 C to + 75 C) and vibration rated
- * 400Hz accelerometer sampling, filtered and reported every second
- * Simple installation

Did You Know ?

A 5% increase in rolling resistance can result in up to a 10% decrease in production and a 35% increase in production cost.



SUMMARY



BENEFITS

DIRECT

- Non-subjective methodology for maintenance scheduling
- Prioritise maintenance & improve efficiency
- Reduce overall rolling resistance
- Benchmark standards

INDIRECT

- Lower operating costs
 - Reduced fuel consumption
 - Reduced tyre wear
- Increase production speeds
 - Lower cost per bcm hauled



ASIAREP
www.asiarep.com

